

X4



Luxury Lines

The X4 is the second model in a new range, aimed at the discerning sailor and his crew. It utilises advanced, proven technology and build techniques which only incorporate first class components, enabling the exploration of new unchartered horizons in comfort.

X-Yachts' background being the builder of the most winning production yachts for more than three decades, is mirrored in the X4's technical specification.

Vacuum infused epoxy / sandwich hull (see explanation on Page 4), galvanized keel hull girder pioneered by X Yachts since 1981, epoxy encapsulated low gravity lead keel faired to original keel sections, discontinued rod rigging with hydraulic backstay adjuster, flush recessed and faired hull skin fittings and standard folding propellers all guarantee 'Superb Sailing Pleasure' for the crew onboard.

The X4 offers an easily handled package, ideal for double handed sailing.



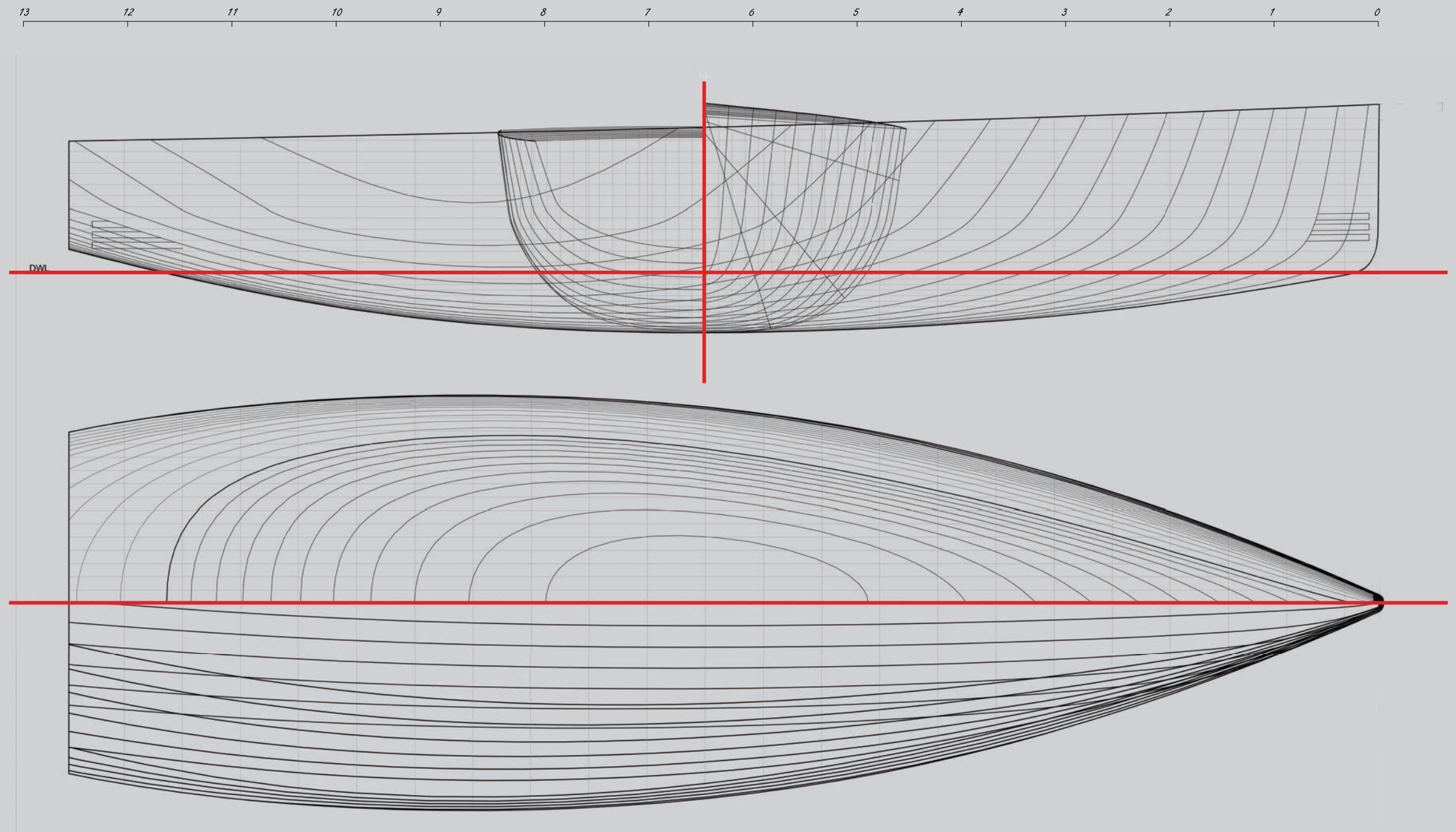
Designer's comments

The story behind the design & construction

The X4's hull is designed to meet the demands from sailors who want to enjoy sailing in a wide range of conditions. Achieving comfort when sailing to windward in a rough sea was an essential prerequisite in the X4 hull design. Generous stability, modern displacement and a powerful yet easy to control sail plan offers smooth sailing through the waves.

Unlike mainstream modern yacht designs, the X4 is meant to be enjoyable and easy to handle in more than just 'reaching' conditions. A lot of focus was put on the upwind performance and sea keeping when choosing design parameters and various aspect ratios. This combined with the thoroughbred X-Yachts racing heritage delivers a new generation of world class cruising.

The X4 hull construction incorporates leading edge technology such as vacuum epoxy infused E-glass fibres in a sandwich M-foam construction, giving the hull the rigidity required to put the mast and rig in tension with very little deformation, avoiding "pumping". Using E-glass instead of carbon skins delivers high overall strength



and stiffness whilst producing a healthy resistance to local impact.

Having a high ballast ratio instead of an extreme hull shape allows the X4 to achieve

comfortable stability. Wetted surface area and friction drag is minimised which is essential for light wind performance.

Clean & functional

The X4 rewards the owner with a deck and rigging layout, designed for the discerning sailor.

Fractional double spreader, tapered silver anodized aluminium mast stepped on steel frame has been specifically designed and engineered for the X4. Carbon mast is optional.

The X4 is fitted with discontinuous rod rigging throughout with rod turnbuckles. Stainless steel chainplates for headstay, center backstay and shrouds.

Halyards and control lines are led back to the aft, concealed below deck whilst all deck hatches are frameless, making for a clutter free environment. The double ended mainsheet system with a track recessed into the cockpit floor ensures mainsail controls are within easy reach of the helmsman.

Four spacious cockpit lockers offer ample storage with one dedicated for the life raft whilst a deck shower is fitted as standard.

The standard white GRP wheel pedestals comes with stainless steel wheels with a leather rim cover. Optional composite wheels are available. The pedestal arrangements can be customised with a variety of instrument pod options (below).

Integrated teak foot chocks aid helmsman position as standard.



Optional compass mount with grab-rail for each wheel pedestal



Optional large instrument mount with grab-rail





Multiple choice

X4 comes with a variety of optional additions on deck including:

- teak on side deck and coach roof
- variety of pedestal arrangements
- electric winches
- fixed cockpit table with space for plotter and instruments or easy to remove stowable cockpit table
- bathing platform
- sprayhood or windscreen

Bowsprit options:



Standard GRP cowl with integrated anchor fitting



Optional carbon bowsprit with integrated anchor fitting



Optional carbon bowsprit without anchor

Below: Image displays the optional windscreen



Spacious living

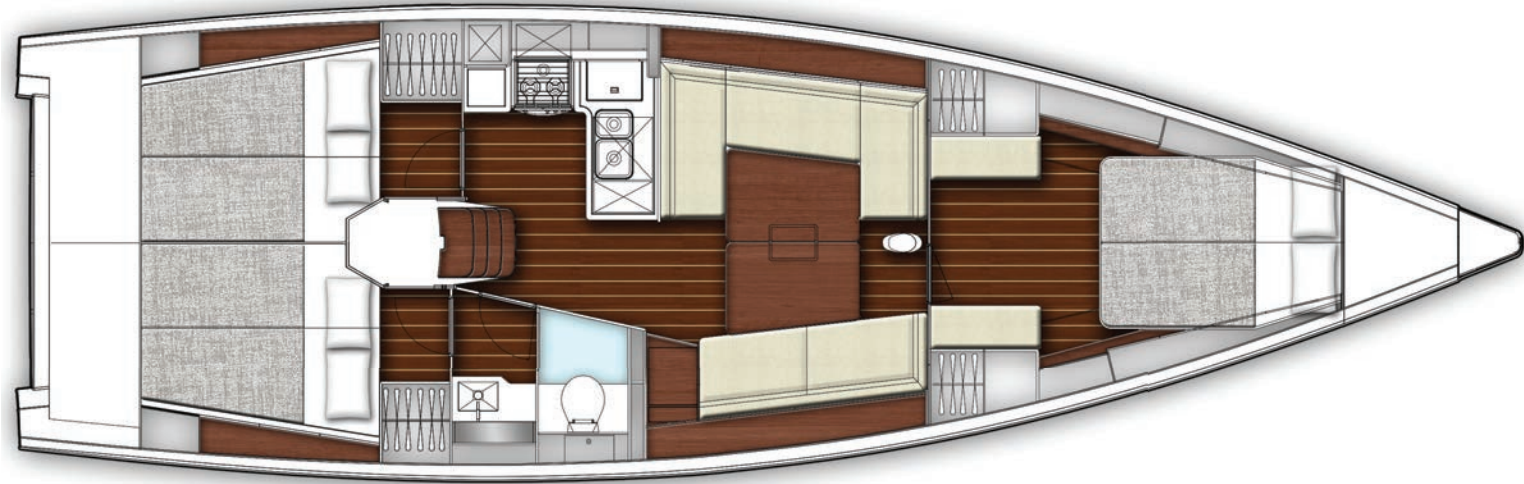
Danish design and architecture is famous for its clean, timeless style. It showcases luxury whilst also being functionally designed to work either out on the open seas or moored up in harbour.

Superior quality, detailed interior carpentry and materials used sets it apart from mass produced boats, producing an exquisite, natural interior.

Numerous deck and hull portlights allow for ample light to flood in, gifting the interior with a bright and roomy ambiance.

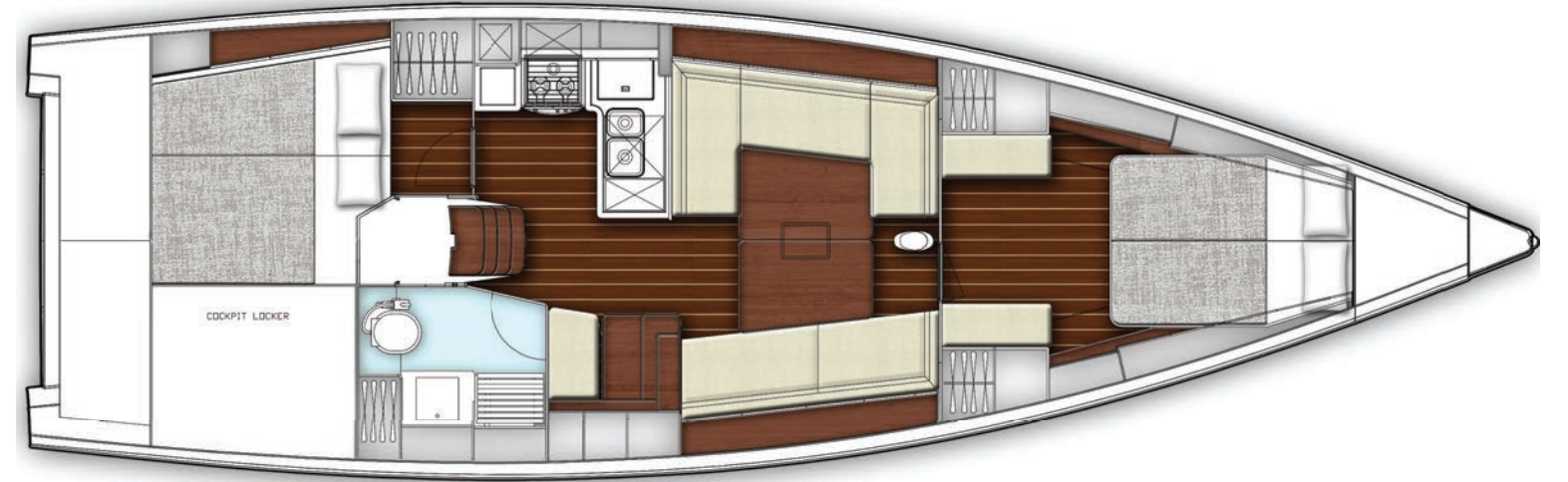
Plentiful storage space throughout allows for an uncluttered, 'live on board' lifestyle, giving you a place one can retreat to when the weather outside is less forgiving.

Interior Options



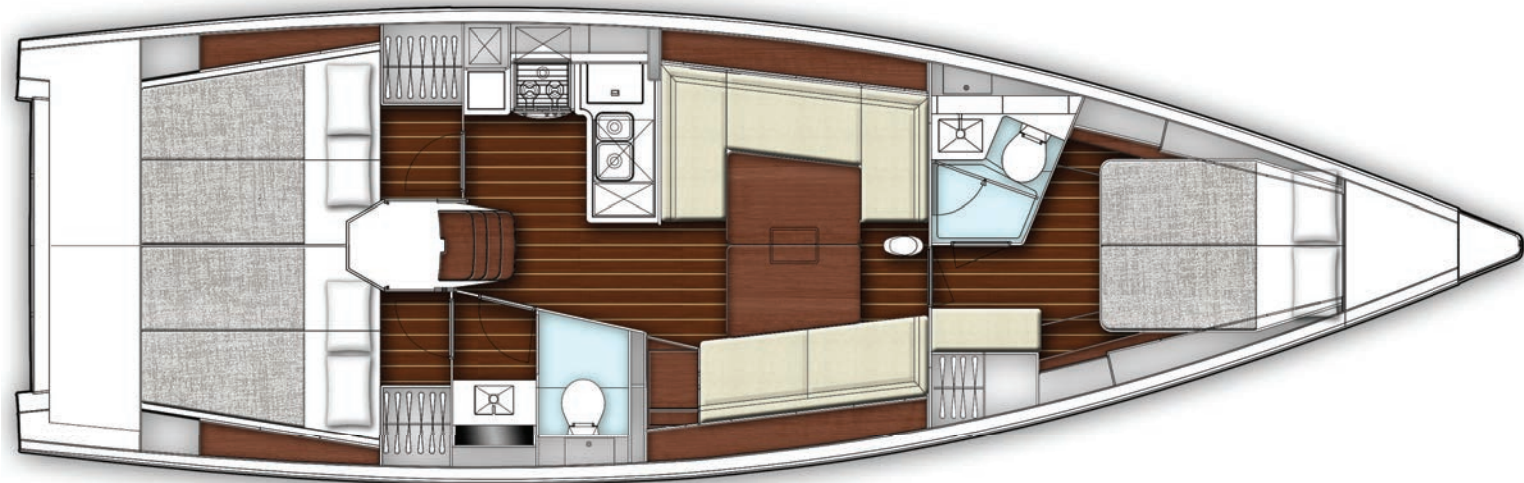
Standard version

3 cabin / 1 head - available Summer 2016



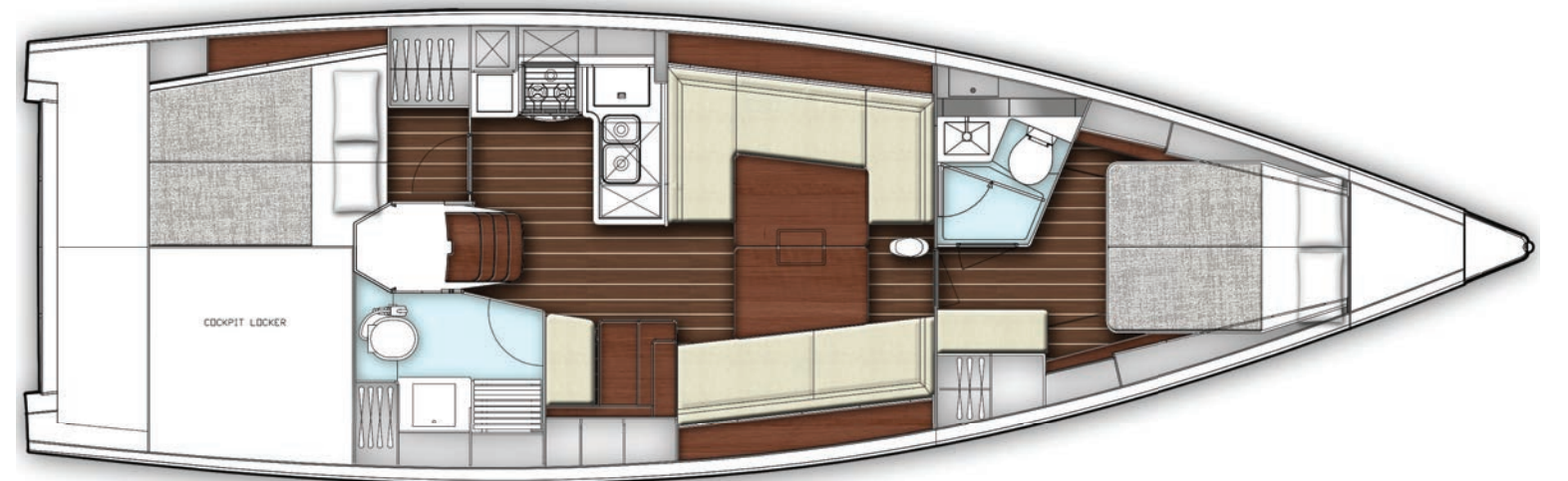
Option 2

2 cabin / 1 head - available Spring 2017



Option 1

3 cabin / 2 heads - available Summer 2016



Option 3

2 cabin / 2 heads - available Spring 2017



Saloon

Above: Image displays the optional surface O-tech veneer, hand polished and varnished to satin finish.

The spacious saloon has a large dining table with integrated wine bottle compartment on port side and can accommodate 6 guests comfortably.

Stylish bookshelves located behind the nav station and saloon seating together with the upper cabinets (bottom hinged doors) on either

side of the saloon provide ample storage for your items.

The nav station is the X4's communication centre as well as the main hub for the yacht's electrical systems. The standard layout offers a forward facing nav station (Image above features Layout Option 1 featuring aft facing nav station)



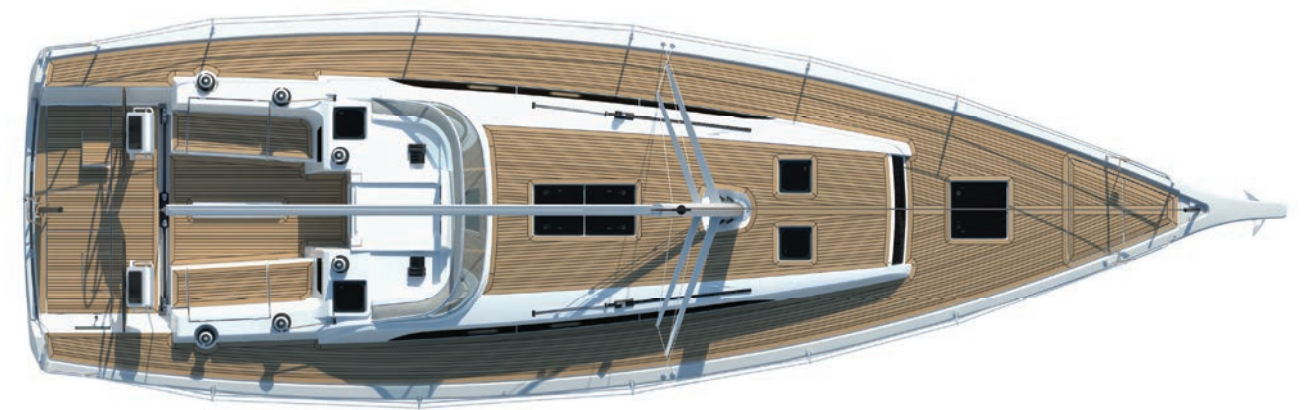
Owner's cabin

Owner's cabin located in front of the mast come with plentiful storage throughout including the two large double wardrobes with shelves and hangers and storage space under the double berth. The port side wardrobe can be replaced with an owner's cabin heads with shower.

All berths have marine plywood support with ventilation holes for improved comfort and air circulation.

O-Tech veneer is optional (image above) and T-Tech veneer is standard (image to right).





X4 Dimensions

Hull length	12.50 m	410 ft
LWL	11.31 m	371 ft
Beam	3.95 m	13.0 ft
Standard draft	2.20 m	72 ft
Shallow draft (L-keel)	1.85 m	6.1 ft
Deep draft (T-keel)	2.50 m	8.2 ft
Ballast (standard)	3,800 kg	8,378 lbs
Displacement (light)	8,850 kg	19,511 lbs

ENGINE/TANKS

Engine diesel	33 kW	45 HP
Fuel tank	200 Ltr	52.8 Gal (US)
Water tank	340 Ltr	89.8 Gal (US)

SAIL AREAS

Mainsail (aluminium mast)	54.0 m ²	581.3 ft ²
Genoa (106%)	43.0 m ²	462.8 ft ²
Spinnaker	15.0 m ²	161.46 ft ²

Sail areas are based on standard mast. Fractional, tapered silver anodized aluminium mast is standard 2-spreader aluminium mast. Optional carbon mast/boom on request.

X-Yachts[®]
WORLD CLASS SINCE 1979